

CGN RECRUITMENT OF PROBANDS AND FAMILY MEMBERS

Principal Investigators: Ken R. Smith, Ph.D., Chanita Hughes, Ph.D.

Study Statistician: Ken Smith, Ph.D.

Statistical Center Coordinator: Nora Horick, M.A.

Study Start Date: 08/2001

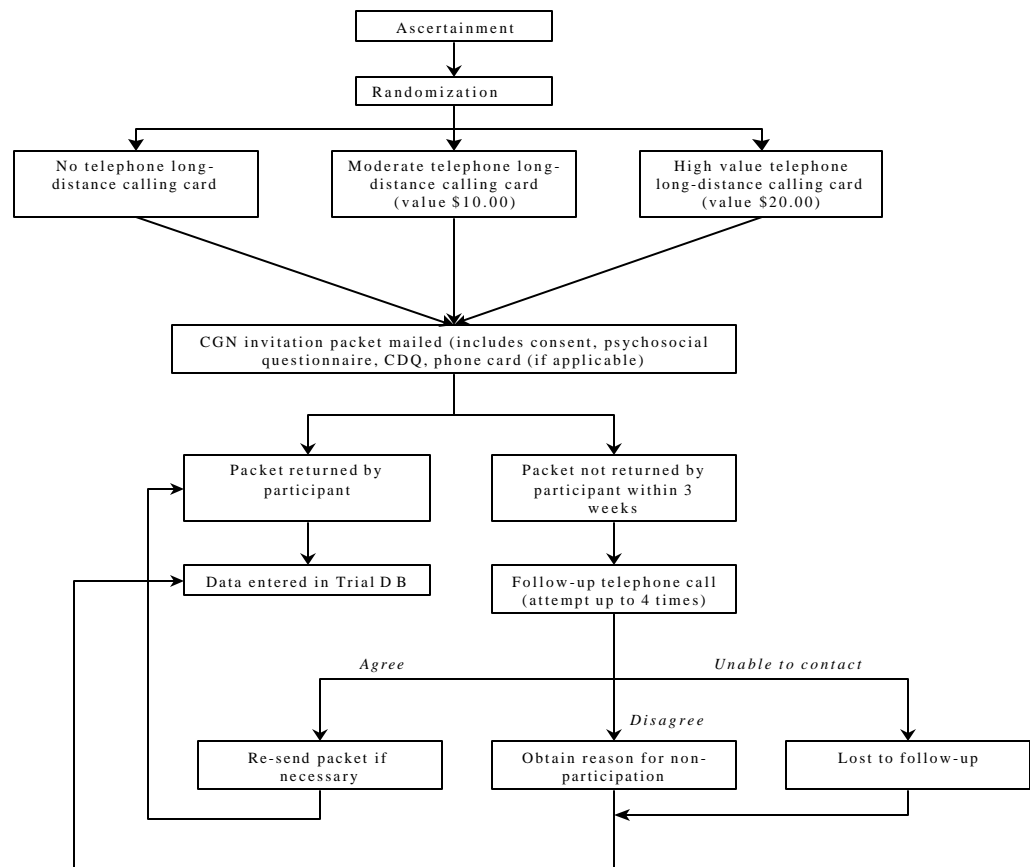
Accrual End Date: 05/01/2002

Projected Study End Date: n/a

Data Cut-Off date: 09/15/2002

Goal: A study to assess the impact of providing an incentive for CGN participation

Schema



CGN RECRUITMENT OF PROBANDS AND FAMILY MEMBERS

Study Objectives:

- To compare the relative impact of providing no enrollment incentive, a moderate-value incentive (\$10.00 phone card), or a high-value enrollment incentive (\$20.00 phone card) on CGN participation among probands.
- To identify probands for whom enrollment incentives are most and least effective on CGN participation.
- To evaluate intentions to involve relatives in the CGN among probands based on sociodemographic characteristics, medical and clinical factors, psychosocial functioning, and enrollment incentive status.

Hypotheses:

- Provision of moderate or high value enrollment incentives to probands will lead to an increased and more rapid participation in the CGN compared to those receiving no incentive.
- Enrollment incentives will be relatively more effective on CGN participation among probands living in lower socioeconomic areas, those without a personal history of cancer, and those at moderate and low hereditary cancer risk.
- Probands who report stronger intentions to involve relatives in the CGN will be those from higher socioeconomic areas, those with a personal history of cancer, lower levels of cancer related distress and those who receive a moderate or high value enrollment incentive.

Eligibility:

- Participants must meet the eligibility criteria established by each of the CGN centers
- Probands (affected and unaffected) must be ages 18 and older
- Probands must have a valid phone number or mailing address
- Probands enrolled into the CGN through genetic testing research protocols at each center are ineligible to participate

Participating Institutions:

Rocky Mountain Cancer Genetics Network (Huntsman Cancer Institute and University of New Mexico)
Georgetown University Medical Center
Texas Cancer Genetics Network (MD Anderson and Baylor College of Medicine)
Carolina/Georgia Cancer Genetics Network (Duke University and University of North Carolina – Chapel Hill)
Johns Hopkins University
University of California, Irvine

Data Management and Statistical Support:

Provided by the Massachusetts General Hospital Statistical Coordinating Center

Accrual Goal

4273 participants